



Hurley Court, Finchley, N12 8FA  
Asking Price £650,000 Leasehold Council Tax Band F

**REAL ESTATES**  
Est.1981

Estate Agents · Residential Sales · Investments · Lettings

A beautifully presented 3 BEDROOM PENTHOUSE APARTMENT in this gated development constructed by Berkeley Homes approx 6 years ago, boasting superb views from the BALCONY which is accessed via the open plan kitchen/living area.

Situated within a stone's throw to North Finchley High Road with its shops, bus services and convenient for both Totteridge & Whetstone and Woodside Park Northern Line tube stations.

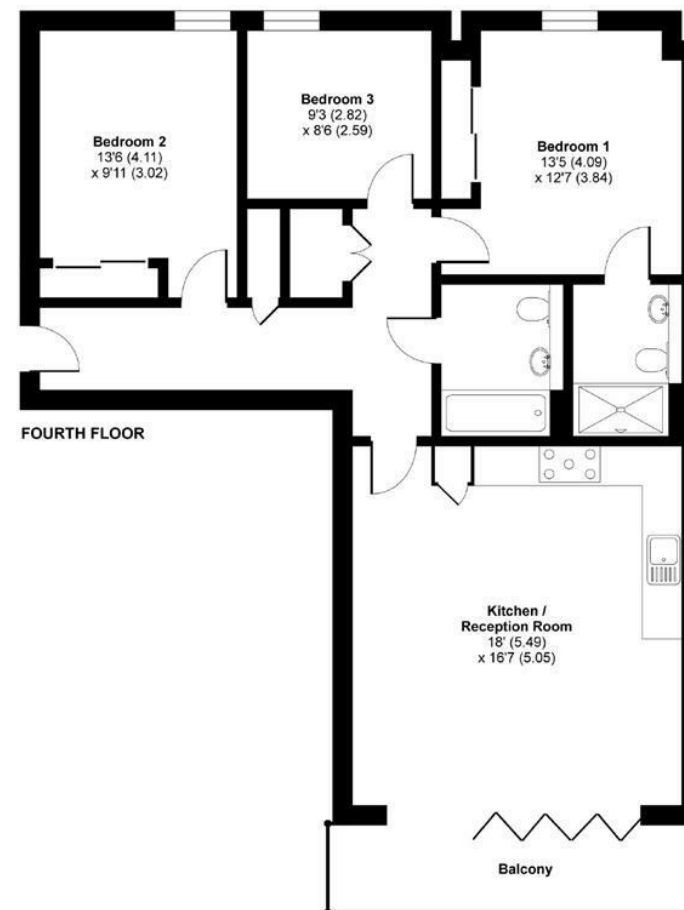
This bright and spacious apartment comprises 3 double bedrooms, en suite wet room and family bathroom with Villeroy & Boch and Hansgrohe fittings, open plan Alno fitted kitchen/living area, balcony, private underground parking and uniquely designed residents' gardens.

Approx 993 year lease unexpired. Service Charge £2,500 pa.

## High Road, London, N12

Approximate Area = 934 sq ft / 86.8 sq m

For identification only - Not to scale



Energy Efficiency Rating		Current	Potential
Very energy efficient - lower running costs			
92-100	A	81	81
81-91	B		
69-80	C		
55-68	D		
39-54	E		
21-38	F		
1-20	G		
Not energy efficient - higher running costs			
England & Wales		EU Directive 2002/91/EC	



Floor plan produced in accordance with RICS Property Measurement Standards incorporating International Property Measurement Standards (IPMS2 Residential). © nixecom 2021. Produced for Real Estates. REF: 736534